



Caledonian

Telephone Cables

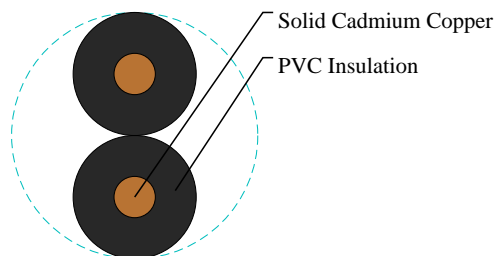
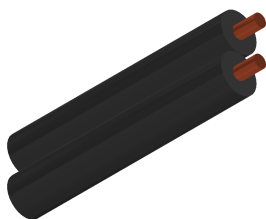
www.caledonian-cables.com

marketing@caledonian-cables.com

INDOOR TELEPHONE CABLES

Drop Wires No. 1 to CW 1166

TP1166-Y-1P091-DW1



APPLICATIONS

The drop wires are designed for extending an open wire line or distribution pairs from a pole or cable terminal to a building. The drop wires are to be installed between distribution point and telephone subscriber premises.

STANDARDS

CW 1166 (Drop Wires No. 1)

CABLE CONSTRUCTION

Conductors: Solid cadmium copper of 0.91mm to BS 4807 (Drop Wires No. 1).

Insulation: PVC to BS 6746 T1 (Drop Wires No. 1).

Cable Core Assembly: Two conductors are extruded parallel, figure-8 type.

PHYSICAL AND THERMAL PROPERTIES

Temperature range during operation (fixed state): -30°C – +70°C

Temperature range during installation (mobile state): -20°C – +50°C

Minimum bending radius: 7.5 x Overall Diameter

DIMENSION AND PARAMETERS

Caledonian Cable Code	No. of Cores	Conductor Size	Conductor Diameter	Insulation Thickness (min.)	Nominal Diameter over Insulation	Overall Diameter (max.)	Cable Weight
		mm ²	mm	mm	mm	mm	kg/km
TP1166-Y-1P091-DW1	2	0.65	0.91	0.75	2.41	2.7x5.6	25